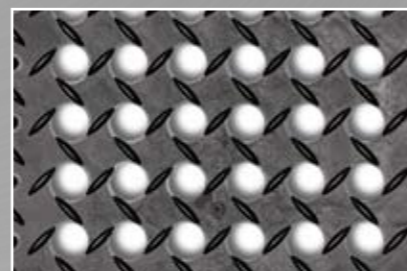


620 Diamond Flex-Lok™



- Sensational fatigue relief due to its unique “flex” design underneath.
- Available pre-assembled or as loose tiles for on-site installations.
- A permanent interlock system ensures that the mat will not come apart. No gluing required.
- Drainage system of round shaped holes of 22 mm diameter facilitates the removal of liquids and debris from the work area without clogging, keeping the surface clear.
- Anti-slip deck-plate surface design tested R10 according to DIN51130 and BG-rule BGR181.
- Resistant to synthetic/hydraulic oils, providing the answer to slips and falls in wet, oily and greasy industrial environments.
- Bevelled ramps are available, eliminating trip hazards and allowing for easy access on to and off of the mat surface. Yellow safety borders comply with OSHA Code 1910-144.
- Ergonomic benefit of 25 mm thickness worker platform.
- Free of toxic DOP and DMF.



620 Diamond Flex-Lok™

PRODUCT SPECIFICATIONS			
Designation	Industrial Matting		
Type	Anti-fatigue / anti-slip		
Description	Modular tiles, edges and corners. Duckboard, anti-slip deck-plate surface design, drainage system, permanent interlock system		
Material	PVC		
Process	Injection moulding		
Category	Best		
Recommended use	Heavy duty – Industrial environments, dry or wet areas		
Colours	Black, Yellow		
Weight	9.7 kg/m ²		
Thickness	25 mm		
Standard sizes	76 cm x 152 cm, 107 cm x 152 cm, 107 cm x 183 cm Tiles : 30.48 cm x 30.48 cm Bevel : 15.24 cm x 30.48 cm Corners : 15.24 cm x 15.24 cm		
Custom sizes	Any dimension or shape, calculation basis per m ²		
Special remarks			
PRODUCT TESTING			
Tests	Norms	Results	
Compression deflection	U.S.		
	1.4 kg/cm ² 2.8 kg/cm ²		
Foam battery	ASTM D3574	40 lb/in ²	
Abrasion resistance	ASTM D3884-01		
	500 Cycles 1000 Cycles		
Static coefficient of friction	ASTM C1028-96	0.69	
Elongation	ASTM D412		
Breaking load	ASTM D412		
Graves tear strength	ASTM D 1004		
Hardness	ASTM D2240-02	85 Shore A	
Anti-slip	DIN 51130 and BG-RULE BGR181	R10	
FIRE TESTING			
	Critical radiant flux	ASTM E-648	0.76 watts/cm ²
	Fire retardancy	DIN4102	
		EN 13501-1	
Flammability test	ASTM D2859		
ESD	ANSI ESD S7.1 50% Humidity		
Sustainability	<ul style="list-style-type: none"> • Recyclable material • Reach Compliant (Registration, Evaluation, Authorization and Restriction of Chemicals) 		